

MICRO SWITCH

FREEPORT ILLINOIS, U. S. A
A DIVISION OF HONEYWELL

FED. MFG. CODE 91929

SWITCH - BASIC

CATALOG LISTING

IXE1-6

FORMTEK
FO-52848-A
DRAWN

K A G 26 JUL 82

IXE1 - 6
PAGE 1 OF 1

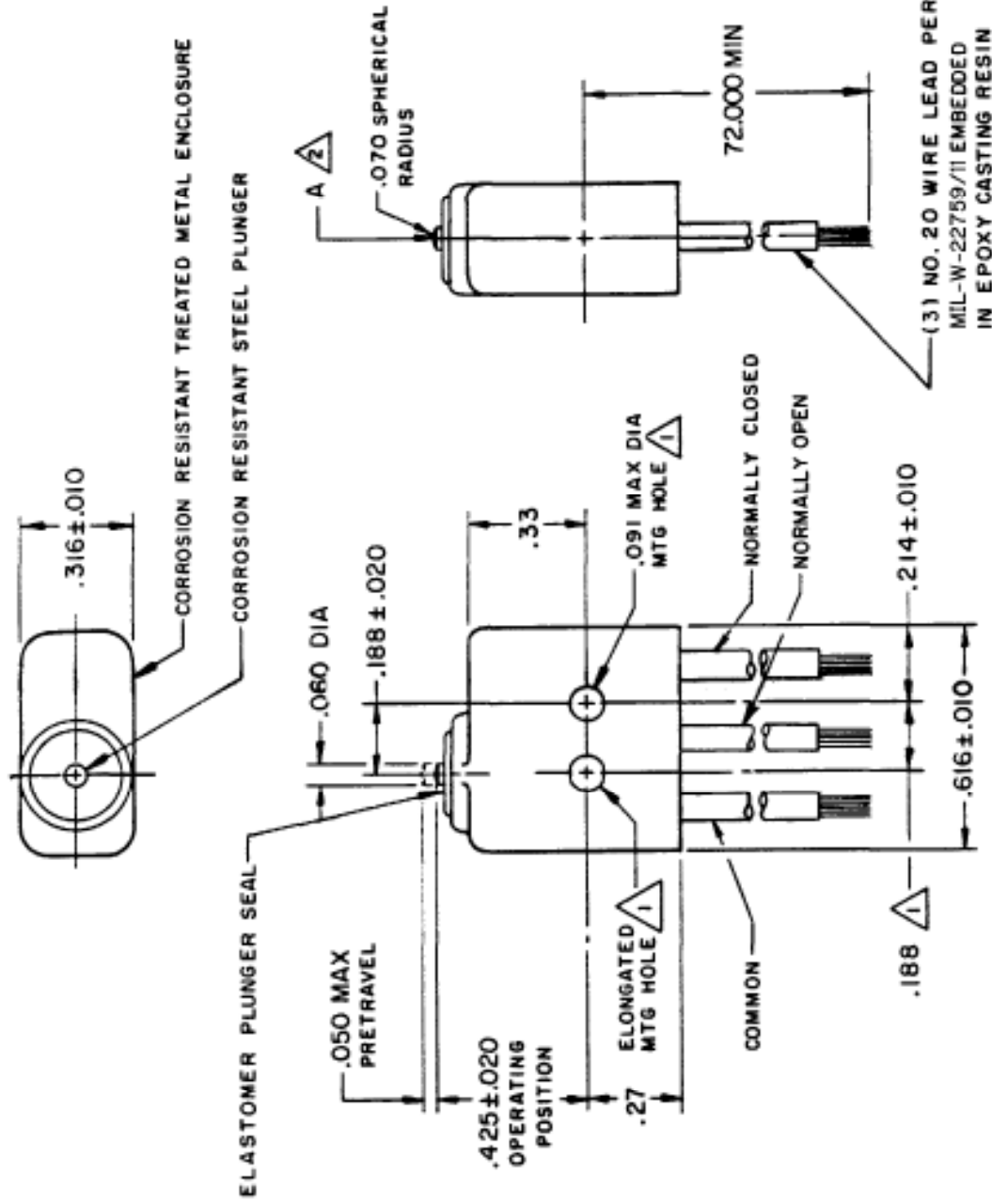
RELEASE NO. SR-11500

ISSUE
23

DRAWING
NUMBER
M

4

REPLACES

**NOTES**

- 1 MOUNTING HOLES WILL ACCEPT .087 MAX DIA PINS OR SCREWS ON .188±.002 CENTERS
- 2 ACTUATION IN LINE WITH ARROW "A" IS RECOMMENDED
- 3 WEIGHT OF SWITCH ONLY IS .16 OZ MAX
WEIGHT OF SWITCH WITH WIRE LEADS IS 2.9 OZ MAX

THIS DRAWING COVERS A PROPRIETARY ITEM AND IS THE PROPERTY OF MICRO SWITCH, A DIVISION OF HONEYWELL. THIS DRAWING IS NOT TO BE COPIED OR USED WITHOUT THE APPROVAL OF MICRO SWITCH.

CHARACTERISTICS

OPERATING FORCE ----- 5-17 OZ
RELEASE FORCE ----- 4 OZ MIN
RELEASE TRAVEL ----- .004 MIN
DIFFERENTIAL TRAVEL ----- .005 MAX
OVERTRAVEL ----- .004 MIN

ELECTRICAL DATA

CONTACT ARRANGEMENT
S P D T

28 VOLTS DC RATING
INDUCTIVE ----- SEA LEVEL ---- 4 AMP
50,000 FT -- 2.5 AMP
RESISTIVE ----- SEA LEVEL ---- 7 AMP
50,000 FT ---- 7 AMP
MAXIMUM INRUSH ----- 24 AMP

THIRD ANGLE PROJECTION



SCALE 2:1

DO NOT SCALE PRINT

TOLERANCES

APPLY TO DIMENSIONS UNLESS OTHERWISE SPECIFIED FOR REFERENCE UNLESS NOTED. TOLERANCES ARE:

NO PLACES	DEC	TOL	OM	TOL
ONE PLACE	F	1/100	IN	1/16
TWO PLACES	F	1/1000	IN	1/64
THREE PLACES	F	1/10000	IN	1/128
FOUR PLACES	F	1/100000	IN	1/1024

DESIGN UNITS IN METRIC US CUSTOMARY

WEIGHT

REVISIONS

A	00-0463
K	AS
B	26 JUL 82
C	57328-A
D	15 APR 85
E	0094274
F	DLM
G	16 MAR 99

CHECK

CHECK

30 JULY 82

C E B

CHECK

82